

NOW LEASING!!!

Welcome Home...Where
Comfort Meets Style



4303 Elm Avenue
Long Beach, CA 90807

AMENITIES

- Beautiful lounge courtyard
- Gas barbecue grill with outdoor dining
- 24hr onsite laundry facilities
- Onsite assigned covered parking available
- View of Bixby Knolls from the apartment
- Pet-friendly community
- 24hr emergency maintenance service
- Professional management
- 24hr maintenance emergency service
- Online rent payment and service work orders

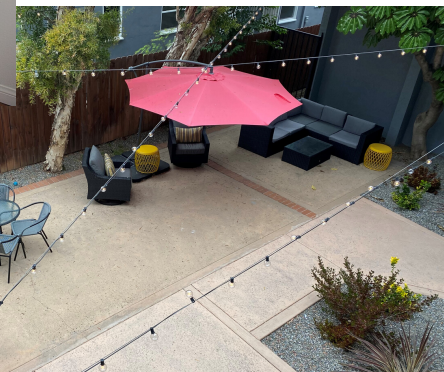
Elm Court is a lovely, boutique 14-unit building right in the heart of trendy Bixby Knolls in north Long Beach. The community features a relaxing courtyard retreat, reserved covered parking, and on site-laundry facilities.

With an 89 "Walk Score," the location provides access to the best retail center in Bixby Knolls (Trader Joe's anchored), local parks and many local activities in the Bixby Knolls area along Long Beach and Atlantic Boulevard. Bixby Knolls is widely known for its numerous restaurants, charming shops, street vendors, parks and fun community events, such as "First Fridays". Not to mention, very easy access to the 710, 405 and 91 freeway, making commuting to Los Angeles or Orange County a breeze.

LUXURY Living

FEATURES

- Extremely spacious floor plans
- Stainless-steel appliance package
- Custom kitchen and bathroom cabinetry
- Granite countertops with breakfast bar
- Designer mosaic tile backsplash
- Plush carpeting, designer tiles, and/or wood-inspired flooring (varies)
- Refinished bath enclosures
- New vanities and mirrors in the bathrooms
- Expansive private balcony
- Large walk-in closets and ample storage
- Ceiling fan in the bedroom and dining area
- State-of-the art, fully deployed split-system wall-mounted air conditioning unit with a condenser and an air moving unit that easily cools the entire apartment
- Stylish lighting and fixture packages



CONTACT TODAY FOR A PERSONAL TOUR!

562.424.0939

Lupita@FusionPMC.com | LongBeachCollection.com

FUSION

PROPERTY MANAGEMENT

FusionPMC.com

